

Different strategies for *in vivo* applications in rheumatic diseases:

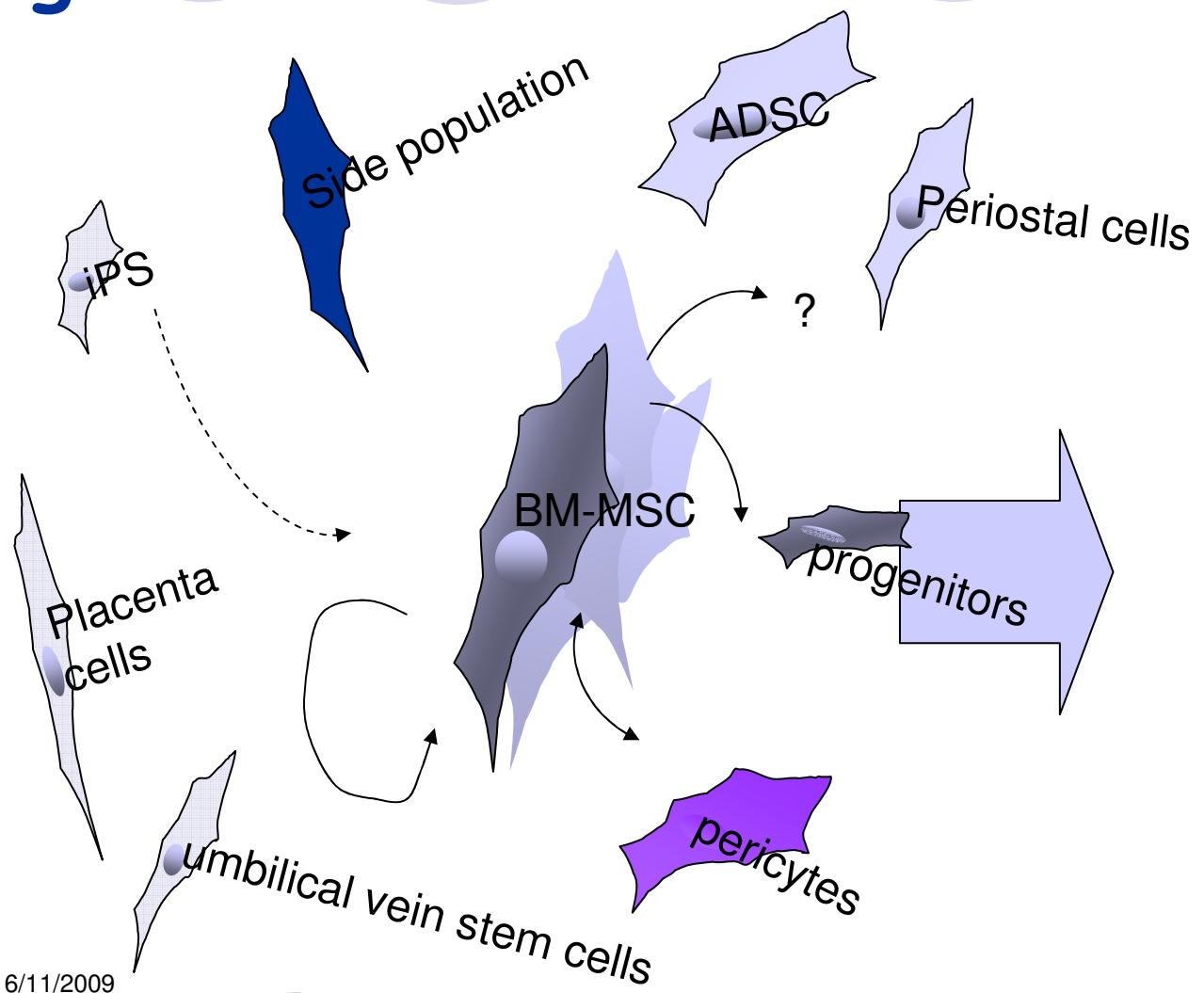
→ For osteoarthritis, the challenge is cartilage

- MSC pre differentiated ex vivo
- MSC + biocompatible scaffolds
- MSC + microsphere releasing growth factors
- Engineered MSC
- Naked MSC: trophic effect

→ For RA, the challenge is immunosuppression

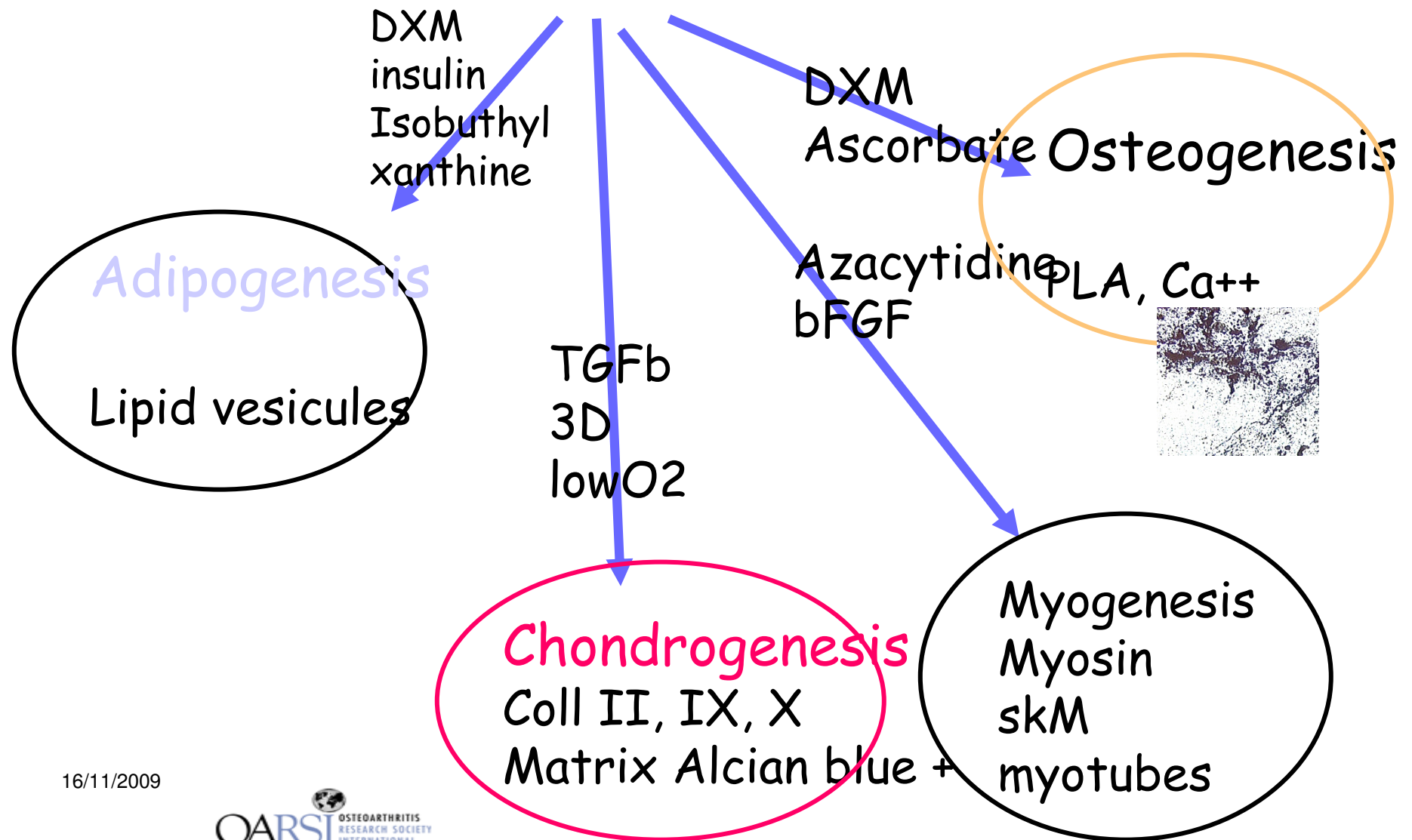
- MSC ± anti inflammatory agent

a common stromal cells or heterogeneous population progenitors?



16/11/2009

mesenchymal stem cells differentiation



16/11/2009